



## Fireside chat: Boosting investment into innovation – how to make it happen?

**Markus Lehmann**, Finance Director,  
IBB Ventures, Germany

**Henrik Storm Dyrssen**, Portfolio/Project Manager  
Venture Capital, Tillväxtverket, Sweden

**Yorgos Mousmoulas**, Partner, Metavallon VC, Greece

**George Loudos**, CEO, Bioemtech, Greece

**Theodosios Sampaniotis**, Policy Analyst, DG REGIO,  
European Commission

✕ #ficompass





# Fireside chat: Boosting investment into innovation – how to make it happen?

**George Loudos**  
CEO, Bioemtech, Greece

✕ #ficompass



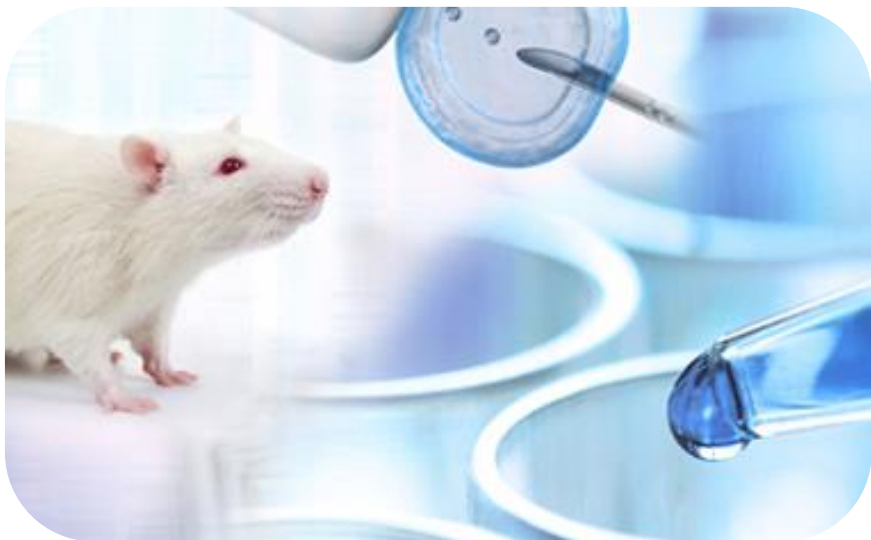
---

# PRECLINICAL PRECLINICAL SERVICES AND PRODUCTS IN DRUG DISCOVERY RESEARCH

FEBRUARY 2024

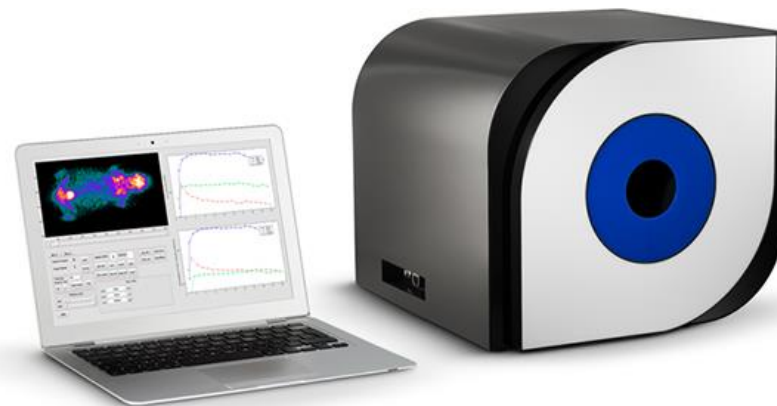


# THE COMPANY



Preclinical studies

Imaging systems



$\beta$ -eye™

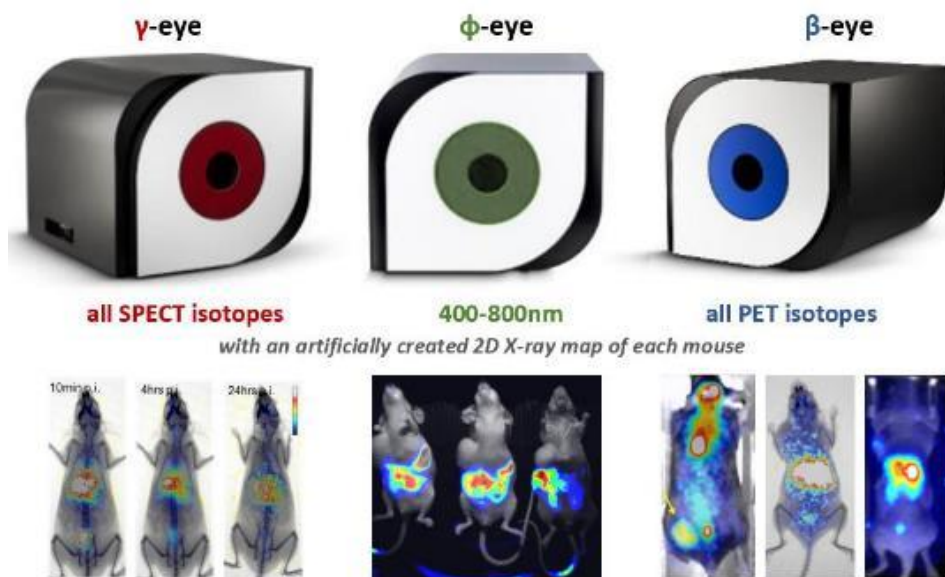




# Company Purpose

BIOEMTECH offers innovative solutions in pharmaceutical and medical research

## Design of desktop in vivo screening systems



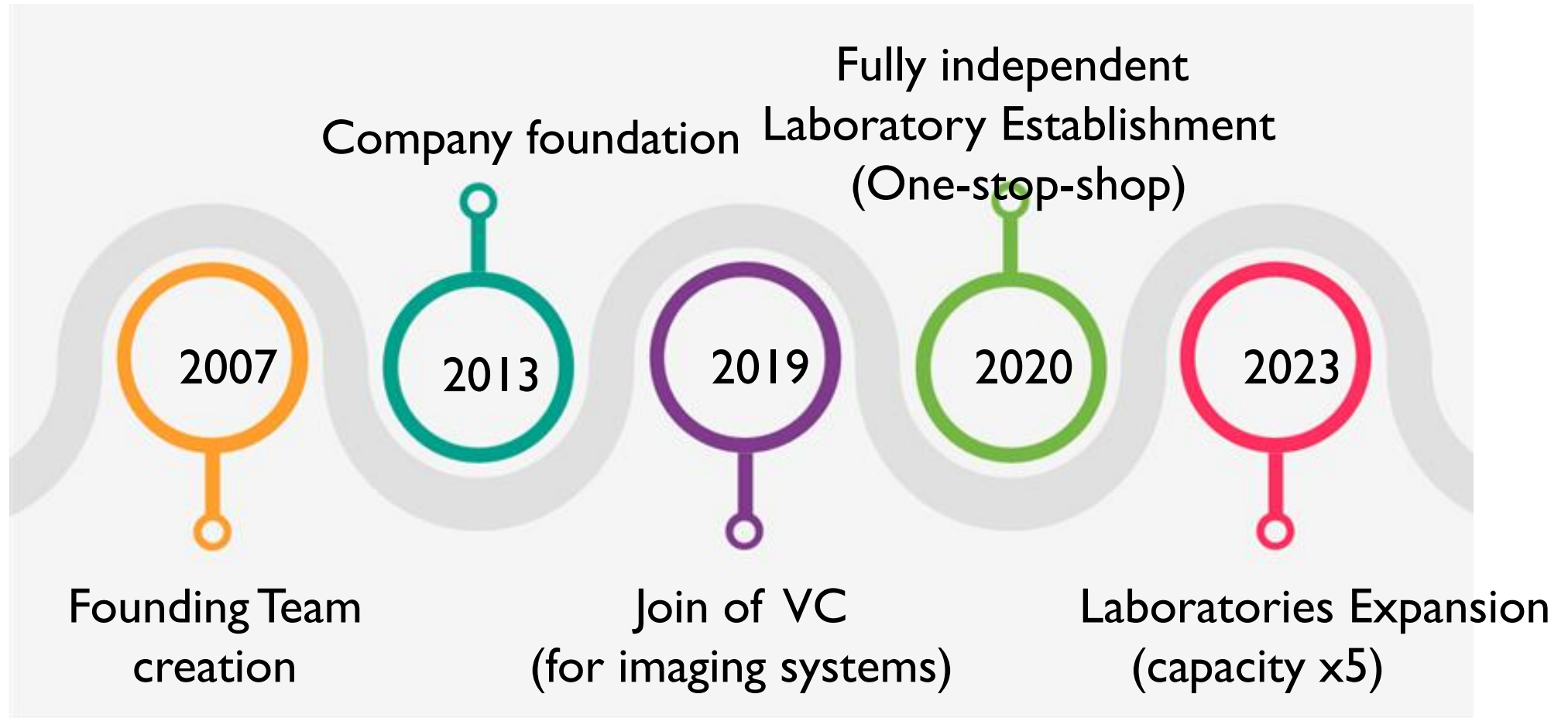
- The only that provide real time imaging
- Customers are researchers and pharma companies
- Already sold 25 units to Europe, US, China, India, S. Arabia

## Preclinical services in our certified laboratories



- Full in vitro/in vivo evaluation of a new compound
- Customers are mainly pharma companies
- Large contracts with European and US companies

# THE STORY



# THE MANAGEMENT TEAM



George Loudos  
**Co-Founder | CEO**



Maria Georgiou  
**Co-Founder | Production  
Manager**



Panagiotis Papadimitroulas  
**Co-Founder | Project Director**



Eleftherios Fysikopoulos  
**Partner | Head of R&D**



Maritina Rouchota  
**Partner & Lab Director**



Efthymios Lamprou  
**Partner | CTO**

## GLOBAL PRESENCE SINCE 2020

**27 eyes**  
10:  $\beta$ -eyes  
15:  $\gamma$ -eyes  
2:  $\varphi$ -eye

**CRO clients**







# ACHIEVEMENTS - GROWTH

## Achievements

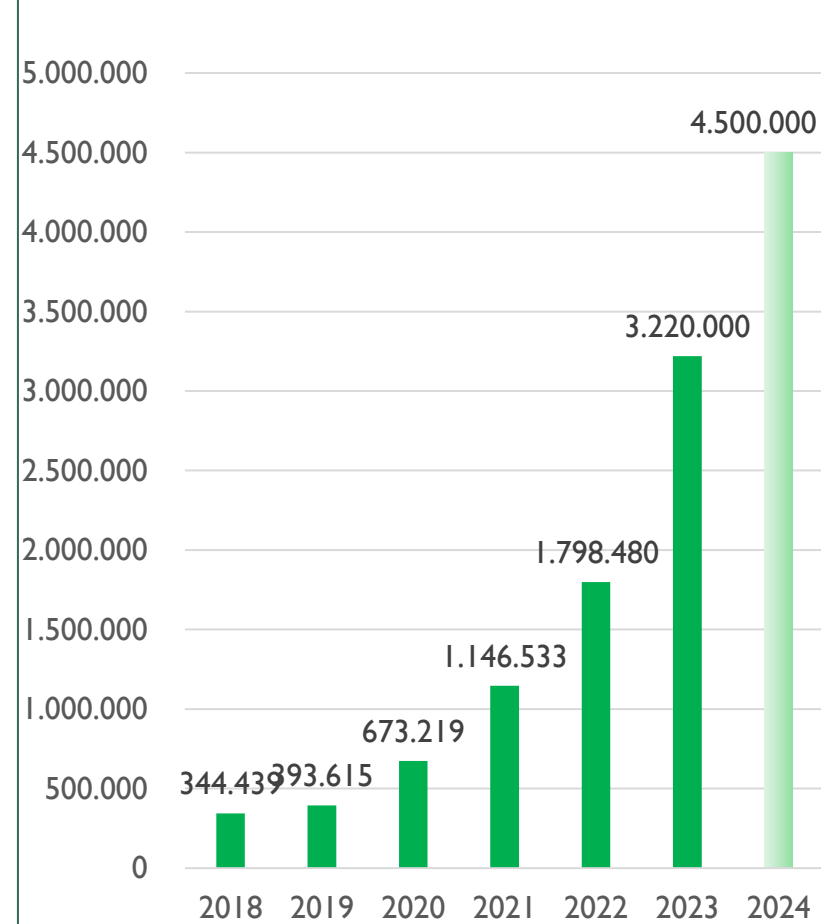
- Up to 3M€ from EU and National Grants
- Pre-seed funding from Metavallon VC: 400k€ in 2019 and 200k€ in 2021
- European Commission Seal of Excellence: 2,5M€ national funding in 2022

## Growth

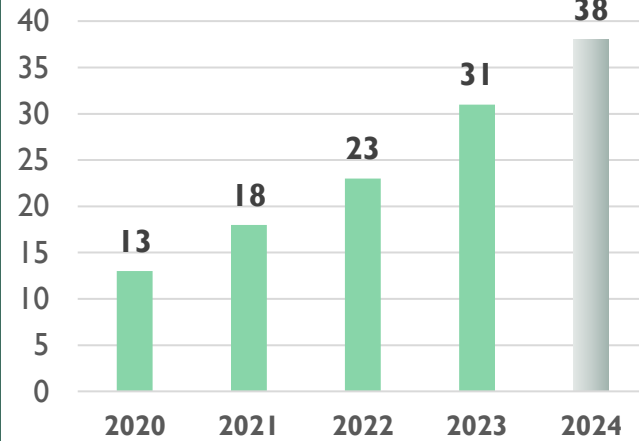
- Fast growth in terms of personnel and lab spaces - with self investment
- Exponential increase in revenues with constantly increasing profitability
- Focus on optimizing company structure and processes and establish strong culture
- See Products + Services + Funding Grants as “assets” in a single company portfolio
- Major goal: Become one of the best places to work in our field worldwide!

# SOME NUMBERS ...AND OUR NEW PREMISES!

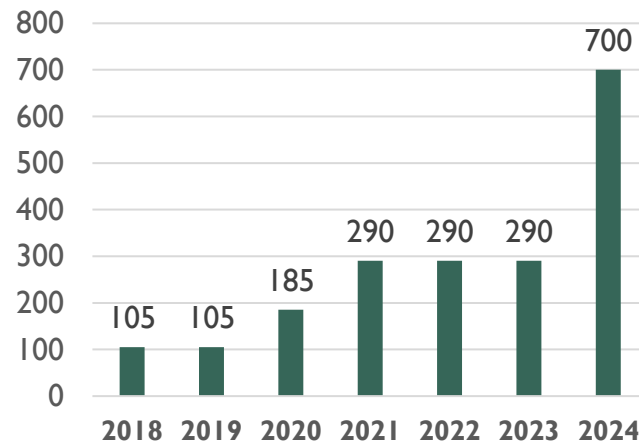
BIOEMTECH revenues



People



Lab space in sq.m





**Thank you!**

[www.fi-compass.eu](http://www.fi-compass.eu)

Follow us:    



*fi-compass* is provided by the European Commission in partnership with the European Investment Bank  
Copyright © European Investment Bank 2024  
[events@fi-compass.eu](mailto:events@fi-compass.eu) | [www.fi-compass.eu](http://www.fi-compass.eu)

