



European  
Commission

# EAFRD-specific *fi-compass* deliverables

## 2014 – 2018

Dr Nivelin Noev  
DG AGRI / H1

*EAFRD fi-compass macro-regional seminar*  
Rome, 13 June 2016

Agriculture  
and Rural  
Development

## fi-compass and EAFRD

Only  
for FI

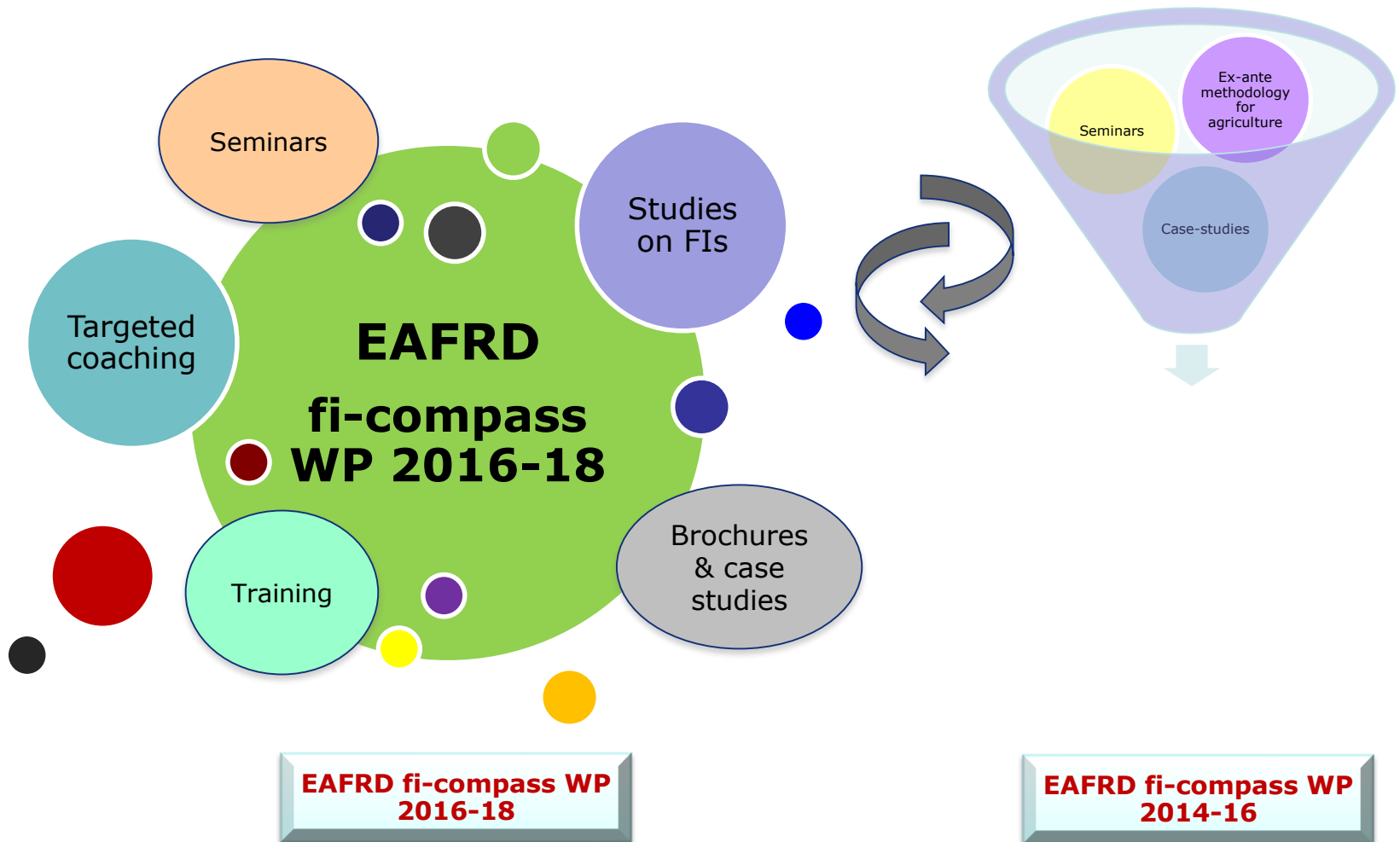
Bi-annual work programme

Budgets and deliverables

Concepts ⇔ Content ⇔ Coaching



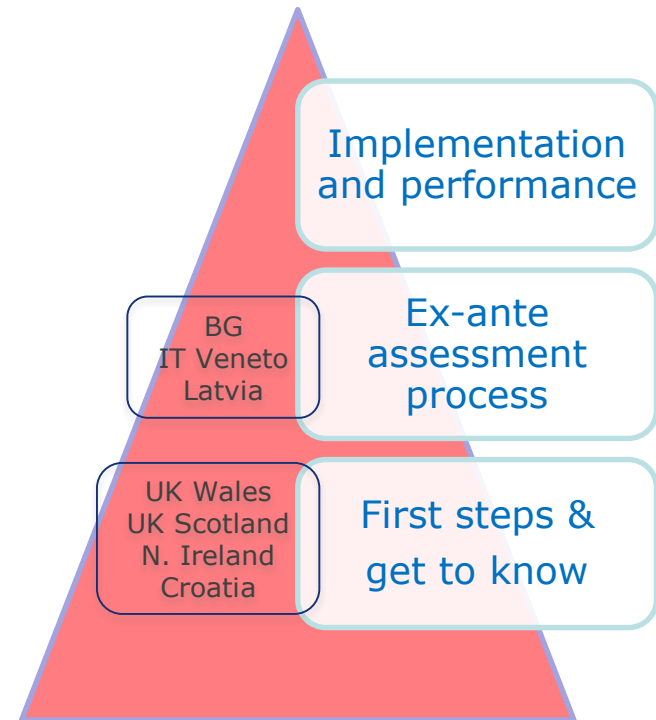
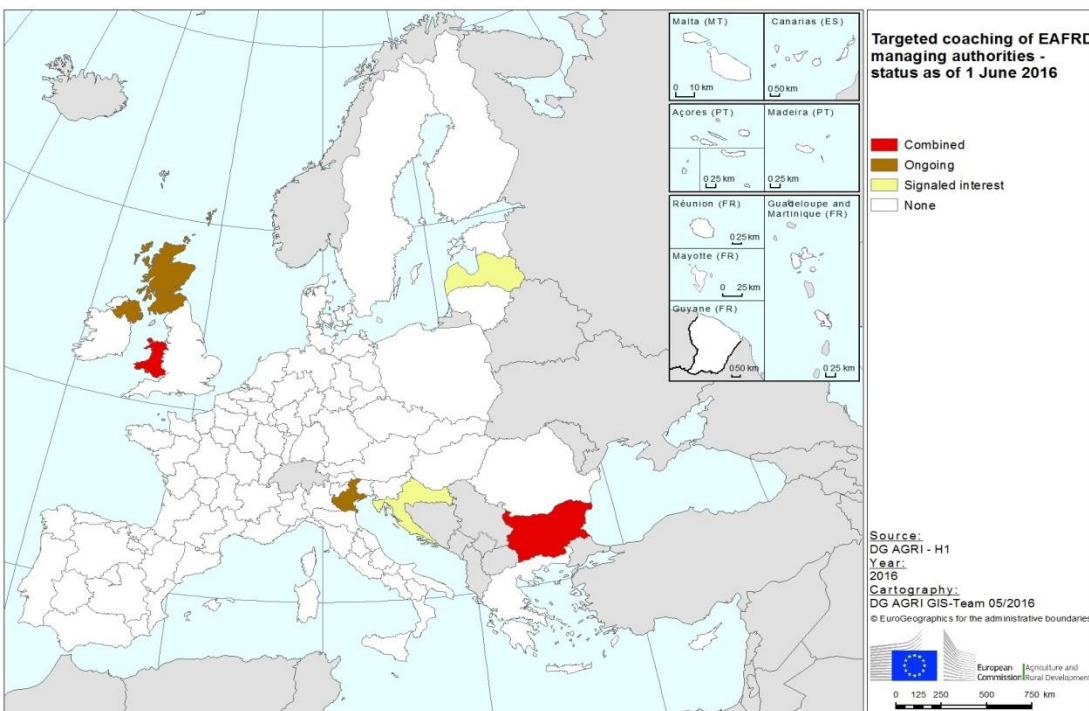
European Commission



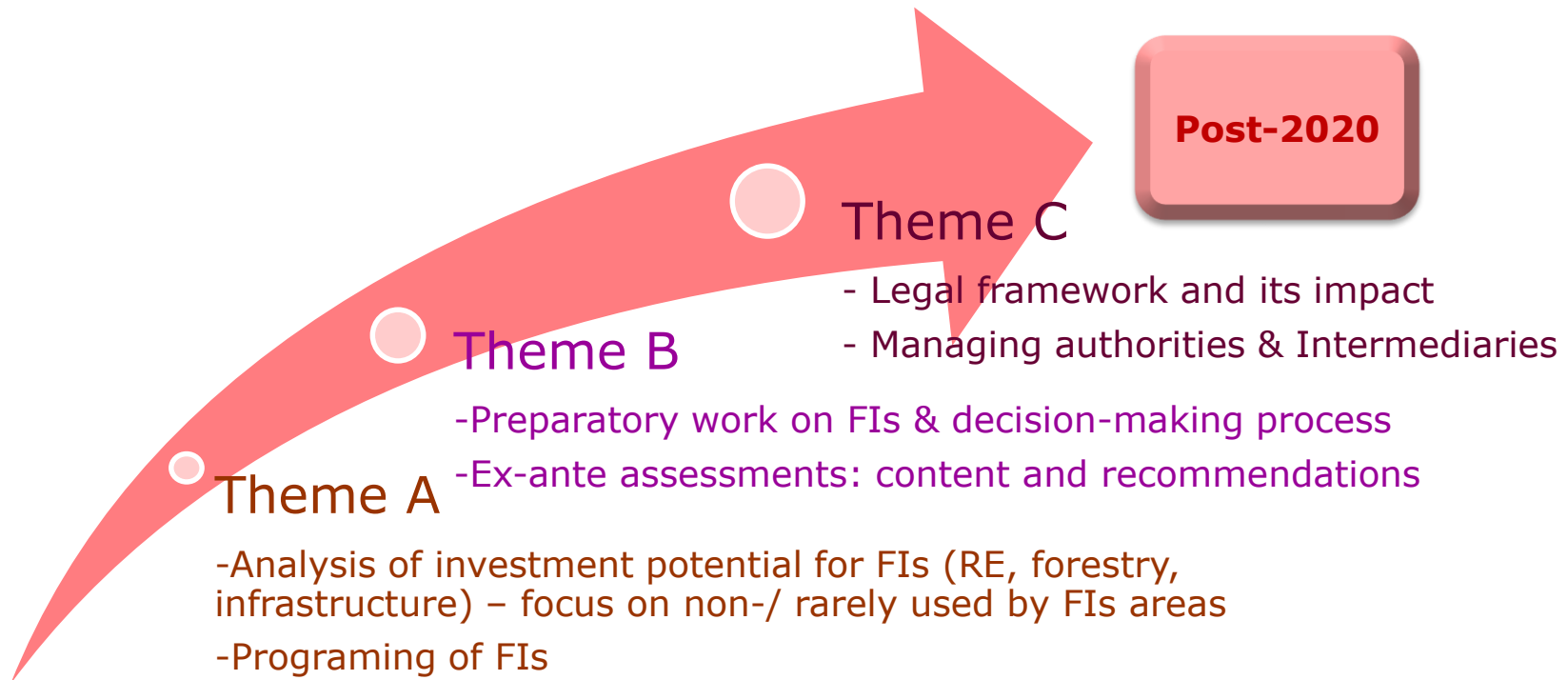


European  
Commission

# Targeted coaching for EAFRD managing authorities under *fi-compass*, Jan – June 2016



## Study on programming of EAFRD FIs

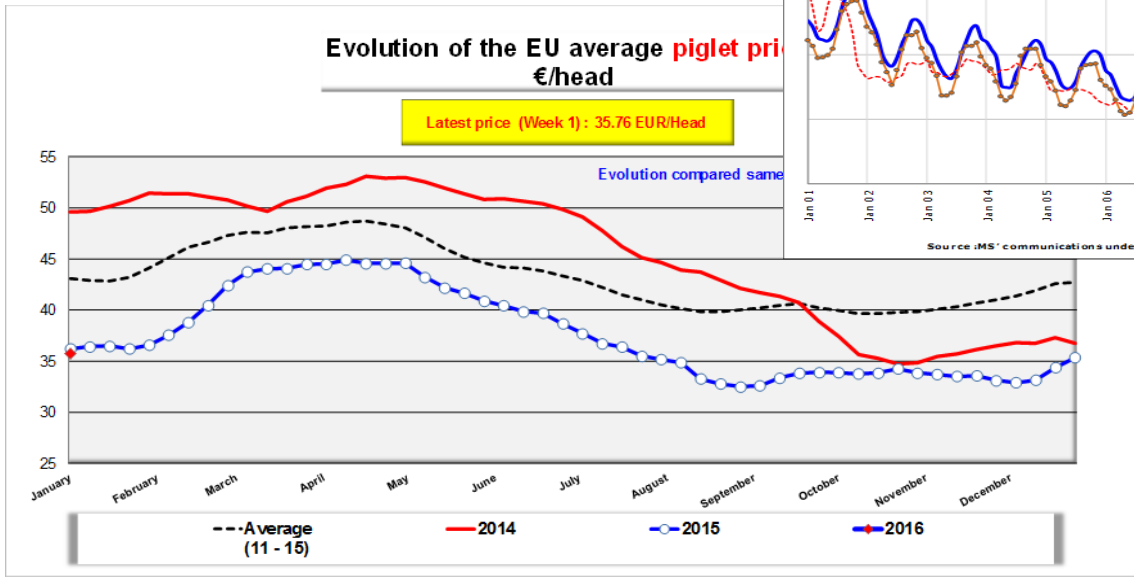
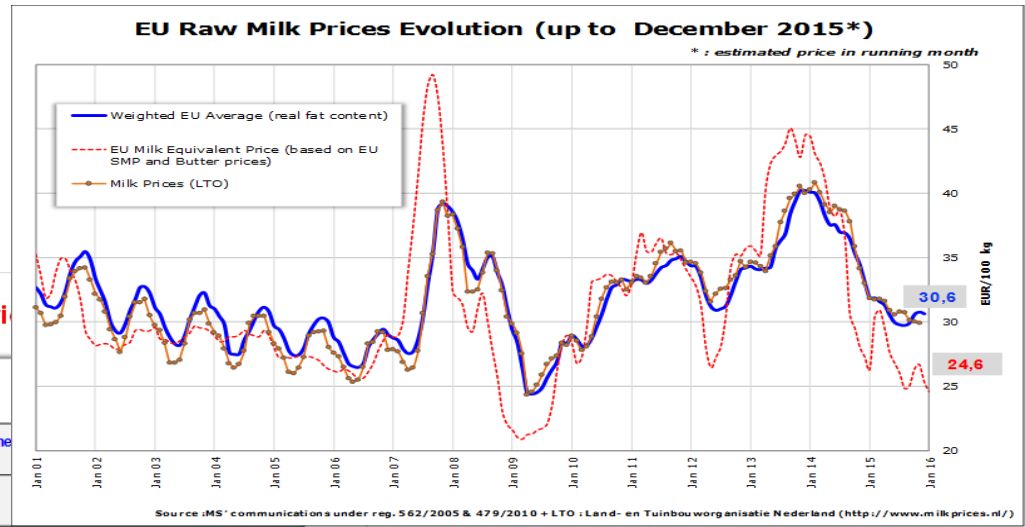




European Commission

# Study on EAFRD FI and price volatility in agriculture

Planned for 2016



Limited sectors (eg dairy)  
Limited real-cases (few MS)

## Conferences and seminars

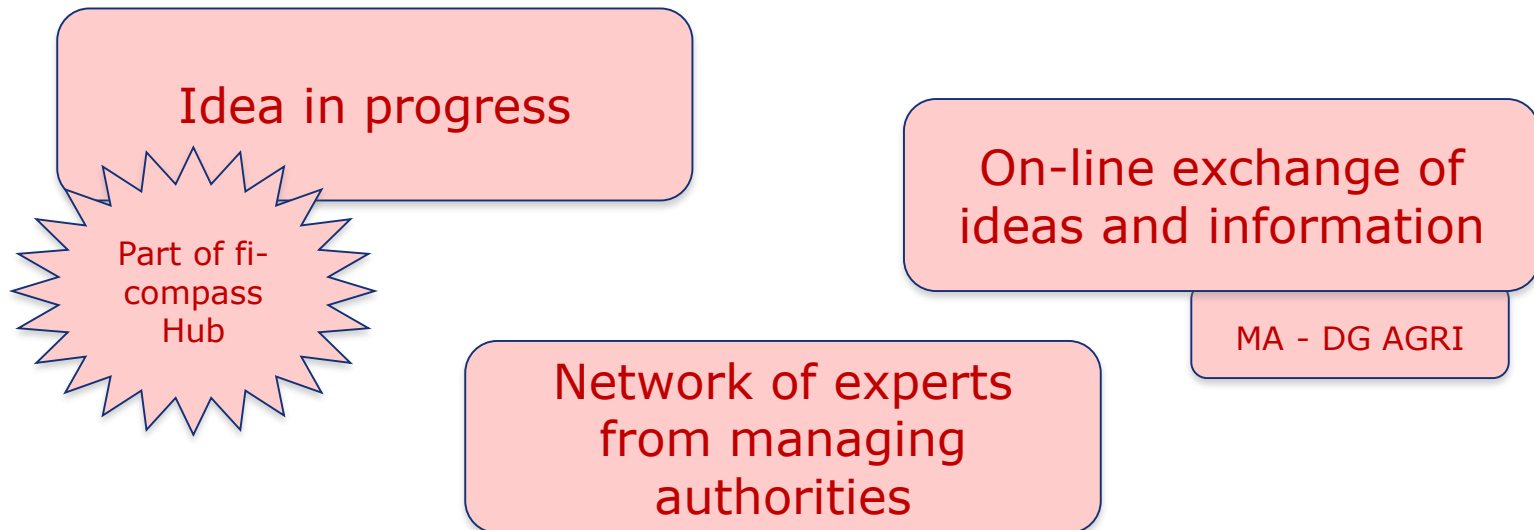
- So far - Dublin, Vienna, Riga, Madrid, Rome
  - ✓ About 580 participants
  - ✓ About 64 presentations
  - ✓ 11 Member States speaking
    - AT, BG, EE, ES, FR, HU, IE, IT, NL, PT, SI
  - ✓ COPA-COGECA and national farm unions
  - ✓ Banks and Funds, AECM, Business angles
  - ✓ EIB / EIF, fi-compass experts
  - ✓ DG AGRI
- Forthcoming – London (Oct '16), Brussels (25 Nov)
  - ✓ Registration via fi-compass website as from September

**Good practice:**

**Regular attendance by  
MA experts / members**

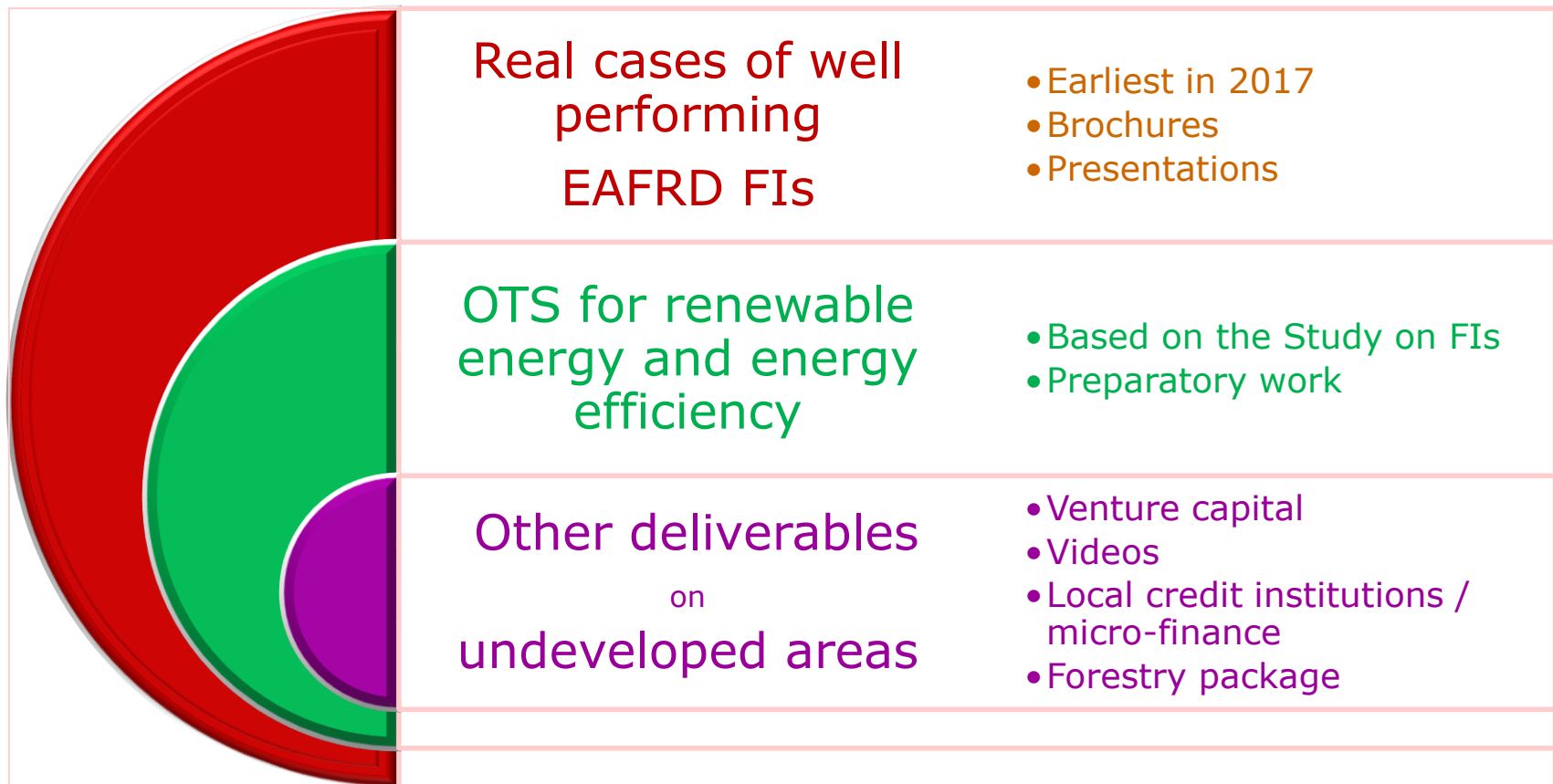
Learning  
Exchange of  
experience  
Networking

## Web-based community for EAFRD MAs





## Brochures, real-life cases & more





European  
Commission

***Thank you for your attention!***  
***Nivelin.Noev@ec.europa.eu***