



Supporting agriculture through national schemes

Sean Farrell, Head of Product Development, Marketing and Research, SBCI, Ireland



Anseo chun gnó a fhorbairt
Corparáid Baincúireachta Straitéiseach na hÉireann
Here to build business
Strategic Banking Corporation of Ireland

 #ficompass



Strategic Banking Corporation of Ireland (SBCI)

WHO WE ARE

IRELANDS NATIONAL PROMOTIONAL INSTITUTION

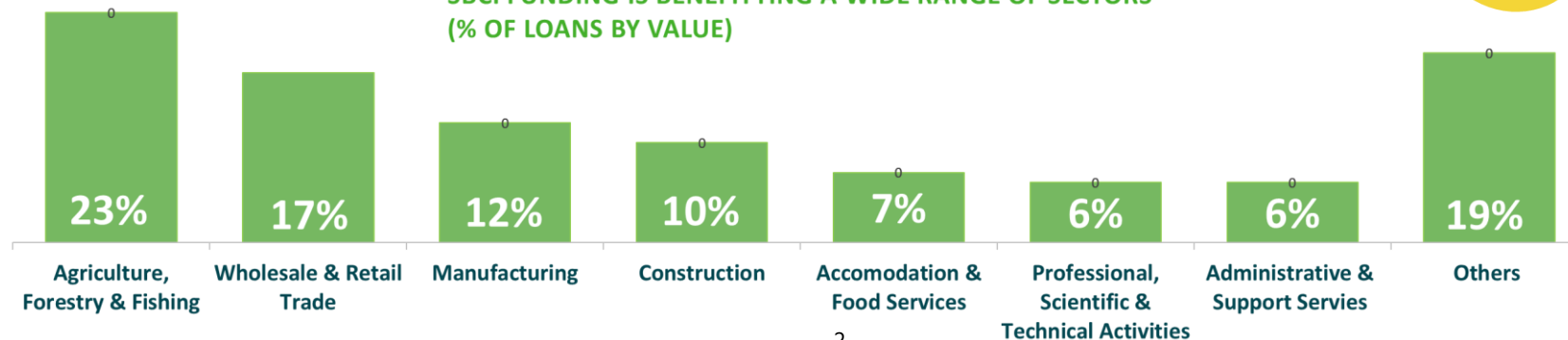
Owned by the Department of Finance
Set up in September 2014

OUR MISSION

Support growth, prosperity and the transition to sustainability, by driving competition, enabling innovation and improving access to finance in the Irish credit market



SBCI FUNDING IS BENEFITTING A WIDE RANGE OF SECTORS
(% OF LOANS BY VALUE)

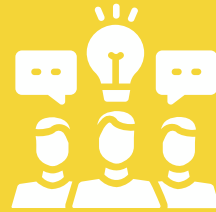


Growth & Sustainability Loan Scheme

SCHEME OVERVIEW



€500M
Discounted medium to
long term loans



Farmers & Fishers
SME
Small Mid-Cap



Government Funded &
Aligned with Policy & EU
Taxonomy



Distributed Through On-
Lender Network



An Roinn Fiontar,
Trádála agus Fostaíochta
Department of Enterprise,
Trade and Employment



An Roinn Talmhaíochta,
Bia agus Mara
Department of Agriculture,
Food and the Marine



#Believe
InSmall



Growth & Sustainability Loan Scheme

SCHEME FEATURES



Business Expansion
Climate Action & Environmental Sustainability Measures
Setting up a New Establishment
Acquisition of Machinery / Equipment
Premises Improvement
Investment in Intangible Assets
New Product / Service
Change in production process



Loan amounts from €25,000 to €3,000,000

Loan term from 7 to 10 years

**Reduced interest rate –
additional sustainability discount**

Unsecured loans up to €500,000

Sustainable Farming Ireland

QUALIFYING FOR THE SCHEME



c. 135 000 farms (7.1% of Irish workforce)

Growth industry – farm profits & food exports increased in 2022, however impacted by inflation

Government policy clearly focused on supporting sustainability

Qualifying criteria is unique to Ireland & Irish farmers

Support from EIB Advisory & assessment from EIB Project Directorate for the Agri-Industry to structure qualifying criteria for farmers

to qualify as a *Green Enterprise* – Irish Government policy and sustainable farming programmes input helped to form this view.

Green Enterprise - Farmer

Farm holdings participating in sustainable programmes such as the Department of Agriculture Food and the Marine's Organic Farming

Scheme, the Agri-Climate Rural Environment Scheme (ACRES) and Bord Bia's Sustainable Farming Origin Green programme.

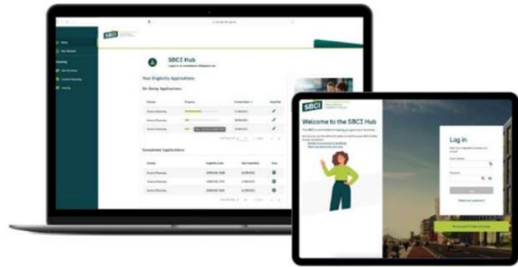
The effect of participation in both schemes ties in with policy on reducing CO2 emissions and sustainable farming practices.

There are c. 4000 organic farmers across various sectors in Ireland as of 2023 – an increase of 2000 on 2022 figures.

ACRES scheme has c. 46,000 members and Origin green has c. 50,000 members.

Investment by Irish Farmers

INTEGRATING THE SBCI HUB WITH THE EIB GREEN GATEWAY



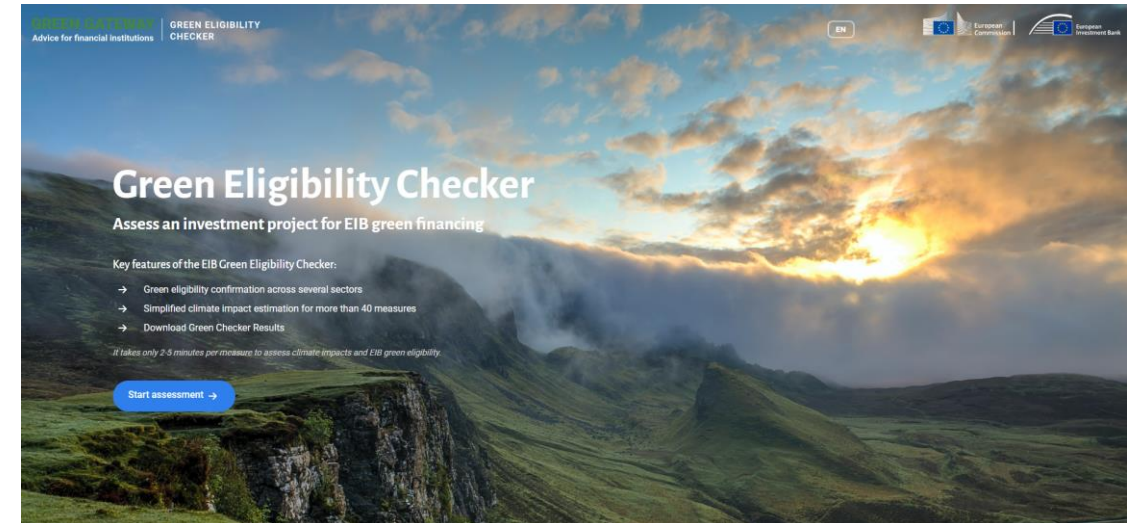
Welcome to the SBCI Hub

Register an account and apply for the Ukraine Credit Guarantee Scheme

- Register and Sign in
- Check your eligibility
- Begin funding process with an SBCI partner

Need support call [1800 804482](tel:1800804482)

[Log in/ Join SBCI Hub](#)



Agriculture Measures

- Harvester Replacement
- Heating System replacement in green houses
- Irrigation pump replacement
- Irrigation system modernisation

- Modernisation of agricultural storage
- Min-tillage equipment
- Tractor replacement





Green Eligibility Checker

for **Strategic Banking Corporation of Ireland (SBCI)**

Assess an investment project for EIB green financing

Key features of the EIB Green Eligibility Checker:

- Green eligibility confirmation across several sectors
- Simplified climate impact estimation for more than 40 measures
- Download Green Checker Results

It takes only 2-5 minutes per measure to assess climate impacts and EIB green eligibility.

[Start assessment →](#)



STEP 2 OF 3

Provide input per measure

Please provide the details requested in the form below according to the best of your knowledge. The investment cost of the measure should be included, if available. You can switch to 'advanced mode' to fine-tune additional characteristics of the measure.

Photovoltaic systems (on-site) ⓘ

Advanced mode ⓘ

Select one of the following for the basis of the assessment.

Power rating of the PV system (kWp) ▼

What is the power rating of the PV system? ⓘ

20 kWpeak

In which region will the system be located?

Ireland ▼

Eligibility status

EIB GREEN ✔

Estimated Impacts

CO₂e savings

3 677 kg CO₂e/year

Renewable energy generation

16 416 kWh/year

Done →



Thank you!

www.fi-compass.eu

Follow us:    



fi-compass is provided by the European Commission in partnership with the European Investment Bank
Copyright © European Investment Bank 2023
events@fi-compass.eu | www.fi-compass.eu

